

12A-568N190 HW-456 (1998)
Belts And Pulleys

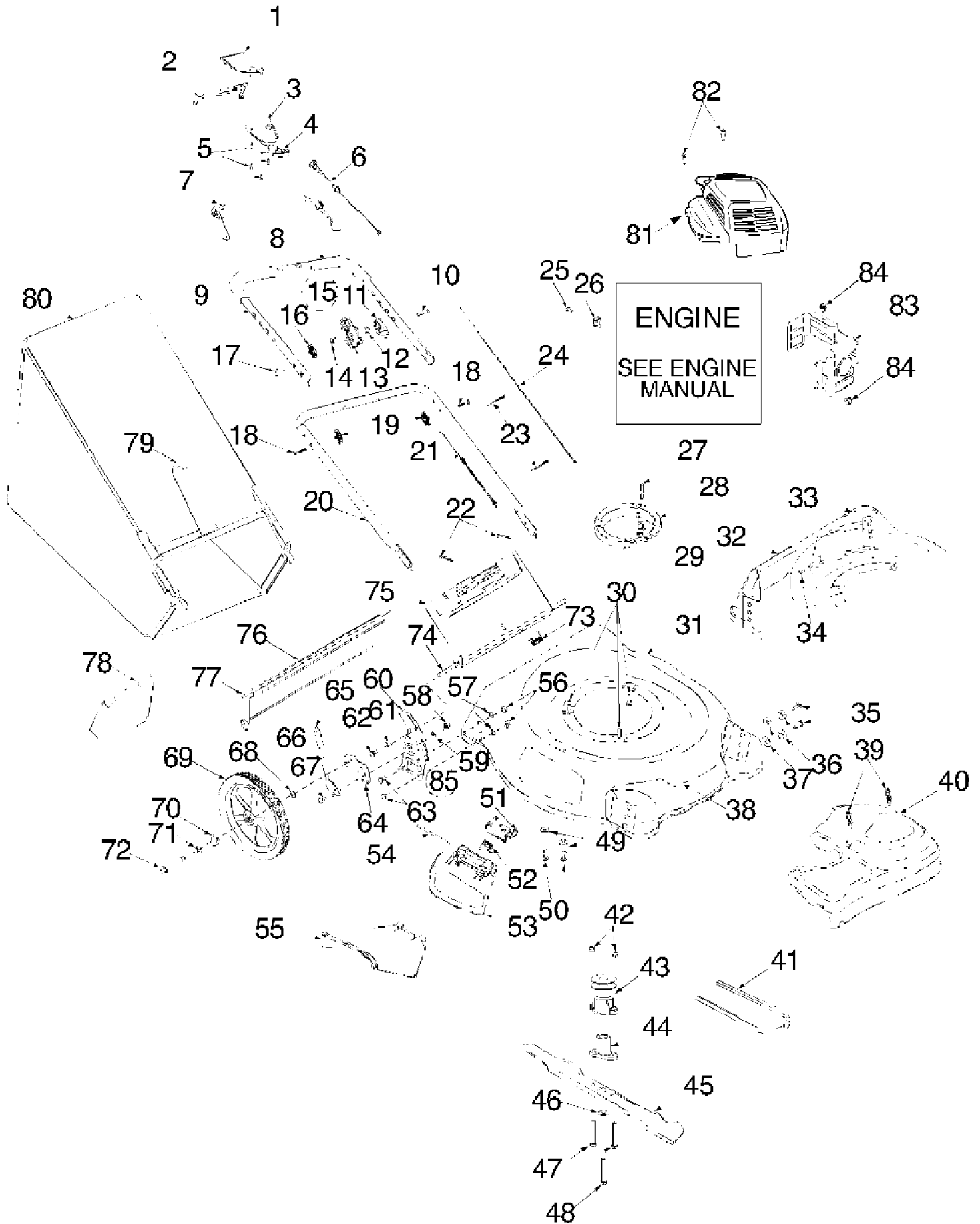
Page 2 of 8

Ref #	Part Number	Qty	S/P/F	Description
1	712-3025	1		Hex Jam Nut 5/16-24
2	736-0425	1	S	Bell Wash .325 x .930 x .045
3	756-1042	1	S	Pulley
4	736-0425	1	S	Bell Wash .325 x .930 x .045
5	712-0896	1		Hex Nut 1/4 - 28 Lock
6	736-0406	1	S	Flat Wash .442 x 1.38 x .060
7	782-7598	1		Belt Keeper
8	741-0124	1	S	Ball Bearing
9	721-0457	1		Oil Seal
10	750-1050	1		Flange Spacer
11	682-0028	1		Idler Bracket Ass'y
12	741-0682A	1	/P	Bearing Sleeve
13	732-0849A	1	S	Wash:Flat: .504 x .700 x .030
14	710-0299	1		Hex Cap Screw 1/4-28 x 1.00 Gr. 5
15	736-0570	1	S	Flat Washer .865 x 1.145 x .030
16	741-0699	1		Needle Bearing .438 x .625 x .500
17	721-0325	1		Plug 1/4 x .437
18	618-0300	1	S	Housing Asm:Upper: (Incl. #16)
19	721-0329	1	S	Seal:Oil: .500 x .687 x .094
20	741-0673	1	S	Flange Bearing .503 x .689 x .792
21	611-0105	1	S	Output Shaft
22	736-0520	1	S	Flat Washer .504 x .700 x .030
23	717-1492	1		Pinion Shaft 10T.
24	736-0314	1	S	Thrust Washer .375 x .70 x .030
25	736-0569	1	S	Thrust Washer .388 x .625 x .062
26	618-0299	1	S	Housing:Lwr: (Includes #27)
27	741-0672	1		Flange Bearing .378 x .531 x .370
28	710-1276	1	/P	Hex Screw w/Wash 1/4-20 x .750
29	618-0298	1	S	Transmission-Complete (Incl. 1 thru 30)
30	732-0708	1		Bearing Retainer
31	741-0604	1	S	Bearing Sleeve .50 I.D.
32	748-0355	1		Bearing Support
33	736-0447	1	S	Wave Washer 1.5 x 1.0 x .029
34	782-0512B	1	S	Height Adj. Plate: RH
35	782-0511A	1	S	Height Adj. Plate: LH
36	682-0509	1		Pivot Plate Asm.
37	732-0706	1		Front Lever R.H
38	732-0707	1		Front Lever L.H.
39	720-0190	1	S	Knob
40	710-0216	1	/P	Hex Cap Screw 3/8-16 x .75
41	736-0474	1		Washer DD 1.5" O.D.
42	716-0102	1	S	Snap Ring 1.0 Dia
43	782-7551	1	S	Wheel Dust Cap
44	717-1534	1		Gear 14T RH Fwd
45	717-1533	1		Gear 14T LH Fwd
46	734-1868	1	S	Whl:Compl: 8 x 2 Link Grey Fwd
47	731-0981A	1	S	Hubcap:Whl: Radial Spoke Grey
48	682-0512A	1	S	Height Adj. Complete RH
49	682-0511A	1	S	Height Adj. Complete LH
50	682-0030	1		Cable Idler Bracket
51	715-0221	1	S	Dowel Pin
52	736-3013	1	S	Flat Washer 1/2 x 1.00 x .063
53	714-0101	1	S	Cotter Pin .08 x 1.42

12A-568N190 HW-456 (1998)
Belts And Pulleys

Page 3 of 8

Ref #	Part Number	Qty	S/P/F	Description
54	738-1002	1		Screw, Shoulder .375 x .25AB: 1/4-20 Thd.
55	754-0465	1	S	"V" - Belt



Ref #	Part Number	Qty	S/P/F	Description
1	731-1057	1	S	Upper Drive Cover
2	731-0620	1	S	Drive Lever
3	731-1058	1	S	Lower Drive Cover
4	731-1059	1	S	Mounting Cap
5	710-0841	1	/P	Screw #10-12: .75
6	746-0960	1	S	Drive Cable
7	647-0004	1		Deluxe Control Lever
8	720-0294	1	/P	Foam Handle Grip
9	749-0439B	1	S	Upper Handle
10	710-0605	1	/P	Screw Oval C-Sunk 1/4-20 x 1.81
11	746-0876	1	S	Throttle Lever
12	736-0501	1	S	Curved Washer .663 x .980 x .014
13	746-0875	1	S	Throttle Hsg.
14	712-0324	1	/P	Hex Lock Nut 1/4-20 Thd.
15	811-00185	1	S	Throttle Comp. (Inc. Ref. 10, 11, 12, 13, 14)
16	720-0279	1	/P	Knob
17	710-1205	1	/P	Eye Bolt 1/4-20
18	710-1174	1	/P	Carriage Bolt 5/16-18 x 2.0
19	720-0276	1	S	Knob
20	749-0907A	1	S	Lower Handle
21	746-0843	1	S	Throttle Cable: 55" B&S
22	714-0104	1	S	Cotter Pin
23	726-0240	1	S	Tie Cable
24	746-0550	1	S	Control Cable: 39" B&S
25	710-1237	1		Hex Screw: T: #10-32 x .625
26	751B213146	1	/P	Clamp B&S Throttle
27	711-1293	1	/P	Pin-Belt Keeper
28	631-0075	1	S	Engine Spacer
29	712-0271	1	/P	Hex Nut 1/4-20 Thread
30	710-1008	1		Tapp Screw w/Hex Lock Wash
31	782-0082-0662	1		21" RD Deck
32	782-5004	1	S	Rear Baffle Right
33	782-5003	1	S	Rear Baffle Left
34	710-1017	1	/P	Scr:AB:1/4-14: .625:Trustrx
35	710-0216	1	/P	Hex Screw 3/8-16 x .75
36	736-0331	1	/P	Bell Wash .39 x 1.13 x .062
37	712-0798	1	/P	Hex Nut 3/8-16
38	782-5002	1	S	Front Baffle
39	7510042824	1	S	Screw #12 x .457
40	731-2101	1	S	Trans Cover - Gray
41	754-0465	1	S	V Belt
42	712-0324	1	/P	Hex Nut 1/4-20
43	756-1146	1	S	Drive Pulley
44	753-0825	1	S	Blade Adapter Kit (Inc. Ref. 42, 46, 47, 48)
45	742-0741	1	S	21" Mulching Blade
46	736-0452	1	S	Flat Washer .516 x 1.5 x .134
47	710-0606	1	/P	Hex Screw 1/4-20 x 1.50
48	710-1257	1	/P	Hex Screw 3/8-24 x 2.50
49	736-0270	1	/P	Bell Wash .265 x .75 x .062
50	710-0599	1	/P	Tapp Screw 1/4-20 x .500
51	782-7006	1		Hinged Mounting Bracket
52	732-0731	1	S	Torsion Spring .290 ID x 1.95
53	682-7000	1	/P	Mulch Plug

12A-568N190 HW-456 (1998)
Deck, Handle And Bag Assembly

Page 6 of 8

Ref #	Part Number	Qty	S/P/F	Description
54	747-0710	1	S	Hinge Pin
55	731-1409	1	S	Chute Deflector
56	712-0798	1	/P	Hex Nut 3/8-16
57	736-0356	1	S	Bell Wash .39 ID x 1.38 OD
58	712-3005	1	S	Hex Flange Lock Nut 3/8-16
59	736-0356	1	S	Bell Wash .39 ID x 1.38 OD
60	682-3056	1	S	Handle Bracket Ass'y RH
	682-3057	1	S	Handle Bracket Ass'y LH
61	736-0270	1	/P	Bell Wash .265 x .75 x .062
62	710-0599	1	/P	Hex Screw TT 1/4-20 x .500
63	710-0896	1	/P	Hex Screw w/wash 1/4-14 x .625
64	17488	1	S	Pivot Bar RH
	17489	1	S	Pivot Bar LH
65	720-0312	1		Foam Grip
66	732-0866	1		Height Adj Lever
67	738-0507B	1	S	Shldr Screw .500 Dia x .434
68	736-0105	1	/P	Wash. .401 x .870 x .063
69	734-1861	1	/P	Wheel Complete 14 x 2 Gray
	741-0484	1	S	Bearing N/I. (2 per Wheel - Incl. w/No. 64)
70	736-0182	1	/P	Spring Washer .50 ID x 1.0 OD
71	736-0456	1	S	Flat Washer .510 x 1.373 x .04
72	738-0481	1	S	Shldr Screw .500 x 2.62 3/8-16
73	732-0809	1	S	Torsion Spring
74	747-0996	1		Pivot Rod
75	782-7599A	1	S	RD Door
76	731-1236	1	S	Rear Flap
77	732-0700	1	/P	Wire
78	782-5007	1	S	Mulcher Plug
79	747-0995	1	S	Catcher Frame
80	664-0086	1	S	Grassbag Asm 21" RD w/Logo Red
81	751B281451	1	/P	Engine Shroud
82	710-1256	1	/P	Screw 8-18 x 1.25
83	782-9017	1		Muffler Guard
84	710-1268	1	/P	Hex Screw B #10-16 x .375
85	682-3058	1	S	Complete Brkt Asm: RH w/Adjuster
	682-3059	1	S	Complete Brkt Asm: LH w/Adjuster

No
Diagram
Available

Parts List
Only

12A-568N190 HW-456 (1998)
Label Chart

Page 8 of 8

Ref #	Part Number	Qty	S/P/F	Description
	777-1584	1	S	Danger - Cut Finger
	777-3800A	1		Safety Label - Straight
	777S30108	1	/P	Warning - Discharge Door
	777S301281	1		Warning - Deck - Curved
	777-0148	1	S	Throttle Label
	777D00299	2		WOP Hub Cap w/Icon Label
	777D01161	1		WOP HW456 Top Shroud
	777D01459	1		WOP Front Trans. Cover